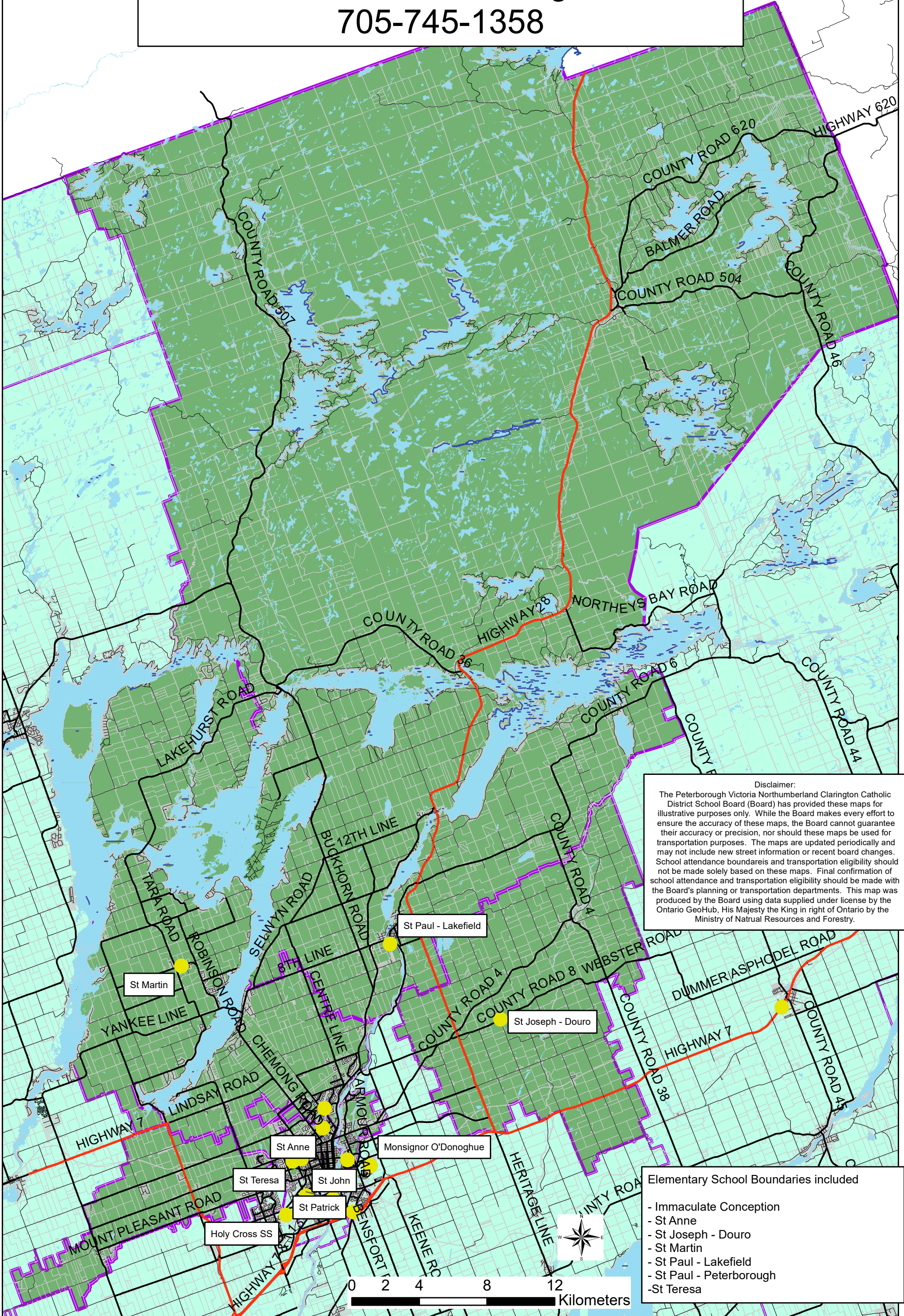


**St Peter Catholic Secondary School**  
 730 Medical Dr, Peterborough, K9J 8M4  
 705-745-1358



**Disclaimer:**  
 The Peterborough Victoria Northumberland Clarington Catholic District School Board (Board) has provided these maps for illustrative purposes only. While the Board makes every effort to ensure the accuracy of these maps, the Board cannot guarantee their accuracy or precision, nor should these maps be used for transportation purposes. The maps are updated periodically and may not include new street information or recent board changes. School attendance boundaries and transportation eligibility should not be made solely based on these maps. Final confirmation of school attendance and transportation eligibility should be made with the Board's planning or transportation departments. This map was produced by the Board using data supplied under license by the Ontario GeoHub, His Majesty the King in right of Ontario by the Ministry of Natural Resources and Forestry.

- Elementary School Boundaries included**
- Immaculate Conception
  - St Anne
  - St Joseph - Douro
  - St Martin
  - St Paul - Lakefield
  - St Paul - Peterborough
  - St Teresa